
"Empowering families to reduce poverty and build just, peaceful, and productive communities based on Christian values."

2021

Annual Report



RESPONDING TO NATIONAL EMERGENCIES IN HONDURAS!



LETTER FROM THE DIRECTOR

Dear friends,

We thank God for each and every one of you for giving of your resources and prayers to help those we serve “to be empowered” in reducing the poverty in which they live, and are learning “to build a more just, peaceful and productive community under Christian values.” These are words so easy to read, but here it takes men and women of vision, of courage, of trust in Jesus and each other, to get by each day of their lives. This year we have worked especially hard, fighting to obtain difficult funding to build new houses for the poor in our work areas, which are areas of great need.

We thank each of you for supporting Proyecto Aldea Global in Honduras, especially during the COVID-19 pandemic and then supplying the resources to support rural families affected by Hurricanes Eta & Iota with food, restored access to water, a new or improved house, among many other emergency relief efforts.

I admit that my faith was shaky at times, and I wondered if we could afford to do very much to restore these families and the local communities. But as God’s children, you quickly responded to His call to share what you could with the most affected families in Honduras.

I sincerely thank you for sharing your abundance with these families who had nothing; most of them did not even know where their next meal was coming from to feed their children. We are amazed at how Jesus has blessed our work all these years, but especially how our meager finances were multiplied this year and as a result, hundreds of Honduran families have hope to begin a new chapter in their lives.

My wife Lizzeth, myself, our staff at PAG, and hundreds of thousands of Honduran brothers and sisters **thank you** for these many years you have supported our work in Honduras! May God richly “bless you and keep you and make His face shine on you and be gracious to you”. – Numbers 6:24, 25

Blessings,

Chet Thomas
Executive Director

CONTENT

Letter from the Director	2
Overview	4
Infrastructure Development:	5
Housing Projects	5
Community Water Systems	8
Basic Sanitation	10
Road Repairs	10
PAG's Development Programs in Honduras	11
Agriculture & Food Security	12
Community Health Programs	15
Livelihood Improvement	20
Small Animals Micro Business Projects	21
Deborah Program—Human Rights	22
Pastoral & Youth Scholarship Program	23
“Progrese” Micro Credit Program	24
Sustainable Tourism	25
In-Kind Donations	28
Financials 2021	30
2021 Friends & Donors	31





House destruction in the community of Aguacatales, Santa Bárbara County.

OVERVIEW

PAG initiated the second phase of its emergency relief program in 2021 to continue to address the immediate basic needs of Honduran families affected by the two natural disasters of 2020.

The heavy rains across much of the country caused river levels to rise, flash flooding, and landslides affecting more than four million persons (more than half of Honduras' 9 million population).

In addition to the health crisis by the COVID-19 pandemic, these natural disasters further exacerbated the humanitarian needs and food insecurity already faced by the most vulnerable populations in Honduras.

PAG continues to implement several critical activities to help displaced families rebuild their lives, a work that will continue for many more years as the needs are great.

We want to extend our deepest gratitude to all our friends and donors for their prayers and generous contribution this year.

The following report details our reconstruction efforts and a summary of our ongoing development programs in central and western Honduras.



Site preparation to begin the house foundation.



Installation of the prefabricated cement columns.

INFRASTRUCTURE DEVELOPMENT

Supported by Church of the Brethren, Church World Service, Jack & Marie Eiting Foundation, Jackson Kemper Foundation, Karleen Kennedy, Shannon Duncan, and other friends of PAG.

Among the most affected regions by flooding and landslides were Santa Bárbara, Comayagua, and Ocotepeque counties, regions where PAG has had presence with its development programs over the years.

Construction of New Houses

This year, PAG worked together with the local municipalities, organizations, and beneficiary families to build 162 low-cost new houses in 11 municipalities of Santa Bárbara, Ocotepeque, and Lempira counties to benefit an approximate population of 810 persons.

Each new house is built with concrete block walls on a solid foundation, with prefabricated cement columns. The roof installed is of metal roofing. A bathroom is included (with a flush toilet and a shower), a stainless-steel kitchen sink, and a clothes washing/water tank.

The municipalities, local organizations, and beneficiary families provided the local materials, skilled and non-skilled hand labor, and the land for the new houses.

Housing Repairs

In addition to the new houses, PAG repaired 148 damaged houses in 8 municipalities of Santa Bárbara and northern Comayagua counties to support more than 740 persons to live in better and safer conditions.

House repairs were completed in communities where families did not have the economic means to acquire land or where municipal land was not available for a new house.



Beneficiary families installing the concrete block walls.



Each new house cost approximately \$4,400 to construct. PAG will continue with the construction of 85 new houses in 2022.



At the end of year 2021, 162 families in Santa Barbara, Ocotepeque, and Lempira counties have moved in to their new house.



Each new house is equipped with a flush toilet, a kitchen sink, a clothes washing/water tank, and a shower. Additionally, families have access to water, sewage, and electricity. Each family will add the inside house divisions in the future.



These Honduran families say, "Gracias" for giving them hope. A new house: a new beginning.



House repairs included replacing old and rusted sheets used as house walls with wood posts and a strong plastic.



Other families benefited with improvements in their outhouse.



Beneficiary family Andres Redondo from the community of Laguna Seca stands in front of his house where his roof is held into place by rocks and wood to prevent it from flying off. A new metal roof was installed and securely fastened on.



Before and after photos of house repairs in the community of Jardines, which included a cement foundation, wood posts, strong heavy plastic and a new roof.



PAG purchased a considerable amount of plastic pipe (worth \$63,900 USD) and \$107,730 USD worth of galvanized 6-in steel pipe to repair essential community water systems. The local inhabitants carried the pipes to the different water sources and repair sites.

INFRASTRUCTURE DEVELOPMENT CONTINUED...

Supported by Church of the Brethren, Church World Service, Jack & Marie Eiting Foundation, Jackson Kemper Foundation, Karleen Kennedy, Shannon Duncan, and other friends of PAG.

Rehabilitation of Community Water Systems

Access to water has been more essential now with the ongoing COVID-19 pandemic. In developing countries like Honduras, some families who live in rural and remote communities still lack access to water and basic sanitation services, including basic hand washing facilities at home. PAG in its 37 years of service to the poor in Honduras has invested considerable time and resources to build and repair hundreds of community water systems to improve the overall health of rural families.

Hurricanes Eta & Iota's rains and flooding brought damages to hundreds of water supply lines, water intake boxes, and water tanks. PAG, in coordination with the local municipalities and beneficiary families, restored access to water to a population of approximately 57,000 people living in rural communities in Ocotepeque, Lempira, Santa Bárbara, and Comayagua Counties.



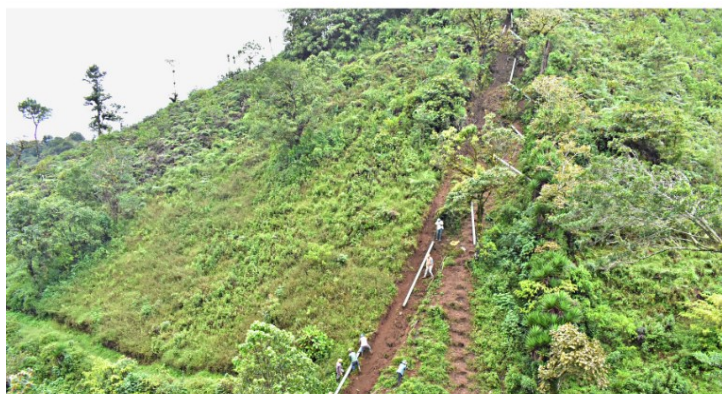
The local beneficiary families contributed with hand labor which included clearing, repairing, and installing the new pipe.



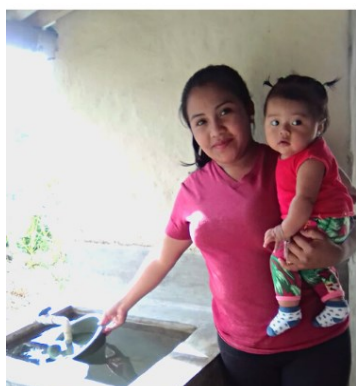
Community water system intake tanks were also repaired.



New pipe installed in the community of Piedra Larga in Belén Gualcho municipality.



Repairs in the Celaque-Magueyal pipeline in western Honduras where plastic pipes were replaced with high pressure steel pipe. This repair work will continue in 2022.



Beneficiary families from the communities of Valle Bonito, Río Negro, and Suyande smile after having their access to water restored.



INFRASTRUCTURE DEVELOPMENT CONTINUED...

Supported by Church of the Brethren, Church World Service, Jack & Marie Eiting Foundation, Jackson Kemper Foundation, Karleen Kennedy, Shannon Duncan, and other friends of PAG.

Construction of Sanitary Modules

PAG's sanitary modules are a combo infrastructure which includes a toilet, shower, and clothes washing/water tank, which is usually constructed outside the house.

In 2021, over 180 basic sanitation projects were constructed in western and central Honduras to improve the overall hygiene measures of rural families. There are still a great number of rural families in Honduras who do not have access to basic sanitation services. By constructing these combos, PAG is contributing to reducing the incidence of gastrointestinal diseases, especially in children.

Road Repairs

A critical aspect of rural development is the construction and maintenance of rural farm-to-market roads. Over almost forty years, PAG has opened more than one hundred and forty miles of rural roads in addition to providing ongoing maintenance work of these roads with the communities and local municipalities by providing support for operating costs. Using older and outdated machinery to cut hillside roads, many remote areas now have access to community markets where they can sell their produce and can have access to health services and local transportation.

In 2000, PAG was working in the area of a large hydroelectric dam where two rivers come together. The building of the dam closed and isolated over a hundred communities when the dam filled with water. At the request of local communities and the local woman mayor at that time, PAG decided to build a ferry boat system to move vehicles, farm products, cattle, and people across the rivers. Two ferries were built by PAG on the dam site using out of date propane tanks and powered by two combined power units. Two ferry boats have been moving traffic back and forth across the dam for more than twenty years, bringing the remote social and economic commercial relationships together.

The two hurricanes that hit Honduras in 2020 damaged both ferries. This year, one of them was repaired and is now working again. Funding is needed to repair the second ferry which we hope to complete in 2022. Each ferry can haul a load of about twenty-tons per trip.



Clearing roads that were obstructed with rocks and fallen trees from flooding and landslides.



Ferry moving people and a bus on the two mile passage across the El Cajon dam.



PAG'S DEVELOPMENT PROGRAMS

The aftermath of the events of 2020 further exacerbated the high rates of unemployment, food insecurity, social inequalities, and poverty experienced by the most vulnerable populations in Honduras.

Agriculture is the main economic activity in Honduras, and it was among the most affected sectors by the pandemic and the two natural disasters, where farm families lost their fields and crops in a matter of days to massive flooding, while others who managed to harvest their crops were not able to transport them to the markets due to blocked or damaged access roads.

Thousands of families continue to have limited access to basic health services and medicines since hospitals have been prioritizing COVID-19 patients, while other clinics or health centers remain closed due to lack of state funding and/or damages to infrastructure after Eta & Iota.

In addition, school buildings have remained closed due to the pandemic, where students are receiving classes via online methods. As a result, over a million students across Honduras have been excluded from the education system since most cannot afford an electronic device and internet service.

PAG continues to carry out its development programs with a holistic approach to human development in order to address the existing gaps experienced by the poorest families in Honduras. The following pages summarize our work to help Honduran families on their way to recovery through our development programs which include:

- Community Health
- Small Animals Micro Business Projects
- Progrese Micro Credit
- Agriculture & Food Security
- Defending & Advocating for Human Rights
- Sustainable Tourism
- Livelihood Improvement
- Scholarships for Education
- Emergency Relief

Flooded agricultural fields damaged crops that were ready for harvest.



AGRO INDUSTRIAL PROGRAM & FOOD SECURITY

Supported by Jack & Marie Eiting Foundation, Jackson Kemper Foundation, and other friends of PAG.

PAG continues to develop agricultural projects in western Honduras to make a difference in the lives of farm families to change their traditional subsistence agriculture to the production of high value cash crops for commercialization in order to improve their overall living conditions through improved family income.

The effects of the hurricanes increased food insecurity, especially in western Honduras, where families lost their crops. PAG responded quickly by donating corn and bean seeds so that families could replant their crops, reactivate the economy, and ensure food for their families for year 2021. A total of 196 families (approximately 980 individuals) from Comayagua, Ocotepeque, Lempira, and Copán counties benefited with agricultural inputs to replant their crops.

The production and commercialization of crops resumed when the COVID-19 movement restrictions were more flexible. In 2021, a total of 1,150 tons of different vegetables were harvested and sold to formal and informal markets.



PAG has supported the diversification of agricultural crops where farmers are now growing cucumbers, peppers, carrots, celery, onions, among other vegetables.



Farm families receiving the donation of agricultural inputs to replant an area of 165 acres with corn and bean seeds.



Approximately 3.2 tons of beans per acre and 8.3 tons of corn per acre are expected to be harvested by the farm families.



PAG continues to provide on-time technical assistance to farm families to ensure that best agricultural practices are being implemented so that high quality vegetables are produced and sold.



Harvested crops are transported to PAG's vegetable processing centers for classification and standardization procedures and then transported to formal and informal markets for commercialization.



A third greenhouse was constructed in Los Arroyos, Copán County in response to the increased demand for vegetable seedling plants.



The greenhouse production of high quality vegetable seedling plants is managed by a group of Lenca Indian women in western Honduras.

AGRO INDUSTRIAL PROGRAM & FOOD SECURITY CONTINUED...

Supported by Jack & Marie Eiting Foundation, Jackson Kemper Foundation, and other friends of PAG.

A third greenhouse was constructed for the production of vegetable seedling plants whose production is managed by Lenca Indian women in western Honduras. With the three greenhouses (one in Belén Gualcho and two in Los Arroyos), the production of vegetable seedling plants covers an area of approximately 463 acres of land to benefit over 600 farmers in western Honduras with high quality seedlings ready for planting in the fields. In 2021, the women's small business produced over 3.7 million vegetable seedling plants (passion fruit, onions, lettuce, etc.) which were sold to farmers for planting.

In addition, PAG has begun the construction of a vegetable processing plant where a local women's group will process ripe tomatoes (and other vegetables and fruits) into tomato sauces, jams, juices, etc. This will generate permanent employment opportunities for 30 plus Lenca Indian women, as well as for hundreds of vegetable farm producers in western Honduras. Providing training in the transformation of products to students is being considered as a future activity as well.



Construction advancements of the vegetable processing plant. Nov 2021.



For mothers with children especially, these brigades are the only opportunity they have for their children to receive medical and dental care due to their limited economic resources to travel to a clinic.

COMMUNITY HEALTH PROGRAMS

Supported by Direct Relief International, Hope International, Jack & Marie Eiting Foundation, Jackson Kemper Foundation, Karleen Kennedy, Shannon Duncan, and other friends of PAG.

Our two community health programs (western and central Honduras) continue to provide comprehensive health support to families in the remotest parts of the country, including Ocotepeque, Lempira, Copán, Comayagua, Cortés, La Paz, Intibucá, and Santa Bárbara counties.

Our health program activities are carried out by our 1,200 plus network of community health volunteers in both programs who receive ongoing training by PAG's health staff.

Medical Brigades and Women's Health:

In response to special health needs of the populations affected by the natural disasters of 2020, our health staff implemented over 30 community medical brigades to benefit over 4,000 individuals with a general health check-up, dental examinations, and dental cleaning (mainly children), and specialized health attention for women, where 2,500 women in Ocotepeque, Lempira, Comayagua, and Santa Bárbara counties received cervical cancer education and examinations.

These health consultations at the community level are suitable for families who cannot visit a private clinic due to limited economic resources, which includes transportation and medicine costs.



PAG's nurse providing education and instructions to Lenca Indian women before the cervical cancer screening examination.



Children received a dental check-up and cleaning, as well as lab examinations to determine anemia, infections, among other common diseases.



The local inhabitants received individualized health care attention as well as medicines and vitamins.



PAG's nurse providing education to Lenca Indian women in western Honduras on the importance of a yearly cervical cancer examination.



Lenca Indian women are hard working mothers who deeply care about the health of their families, sometimes abandoning their own health to provide for their children.



AIN-C mothers during a monthly weight control session in a community in Lempira county.



Acute respiratory infections in children are common and mothers bring their children to a nearby community owned pharmacy for nebulization services.



Reinforcement training to community health workers in proper diagnosing and treatment for common diseases.

COMMUNITY HEALTH PROGRAMS CONTINUED...

Supported by Direct Relief International, Hope International, Jack & Marie Eiting Foundation, Jackson Kemper Foundation, Karleen Kennedy, Shannon Duncan, and other friends of PAG.

Community Owned Pharmacies:

In 2021, PAG increased its efforts to provide the rural population with access to medicines and health services within walking distance, benefiting 163,850 individuals with direct health services and low-cost medicines through its 471 community owned pharmacies (390 in central and 81 in western Honduras). Education was also provided to the local population about the COVID-19 pandemic and preventive measures.

AIN-C (Comprehensive Nutritional Care for Children in Communities) Strategy:

PAG's health volunteers continued to monitor the growth and overall nutrition of 1,050 children under two years of age (324 in western and 726 in central Honduras) to tackle and reduce malnutrition which is commonly found in rural children. Ongoing education was provided to mothers in the preparation of nutritious foods using local resources to improve their children's weight and overall nutrition.

Regional Medicine Restocking Centers:

At present, PAG has 17 regional medicine restocking centers in central and western Honduras which resupply PAG's community owned pharmacies with medicines and hygiene products. These restocking centers are being organized into community savings and loans bank as a result of the amount of assets each center has accumulated through the years. These community banks aim to boost the local economy, and therefore increase production and family income of the local inhabitants who take out a loan to invest it in agricultural production, entrepreneurship activities, house construction or repairs, family health expenses, among other activities.



Community health workers weighing children during a weight and nutrition control session (AIN-C).



AIN-C mothers prepare nutritious and healthy meals to improve the weight of their children.



Mothers with children presenting nutrition problems receive education and counseling during each control session until the child's weight improves.



PAG has over 1,000 community health volunteers who manage the community owned pharmacies to provide basic health services and low-cost medicine to the local population.



PAG continues to invest in the local human infrastructure of its health projects by providing ongoing training to community health volunteers in western and central Honduras.

COMMUNITY HEALTH PROGRAMS CONTINUED...

Supported by Direct Relief International, Hope International, Jack & Marie Eiting Foundation, Jackson Kemper Foundation, Karleen Kennedy, Shannon Duncan, and other friends of PAG.

Acknowledgements

We want to recognize two strong and dedicated women who played an important role in the successful implementation of PAG's community health programs, which PAG began in 1991; women who have continued to serve the local rural population with their health skills and knowledge.

Over the course of 30 years, Paula Vasquez and Amalia Dubón have invested considerable time and effort to training community health volunteers, especially in the aspects of weighing and evaluating children under two years of age under the AIN-C strategy. Back in 1991, when community access roads and transportation services were limited, Paula & Amalia made every effort to reach remote communities which had never been visited by the local secretary of health, to begin providing young children with comprehensive nutritional care. Additionally, they began training community leaders to provide basic health care attentions to the local population through the community medicine fund (today known as community owned pharmacies) and educating women in aspects of sexual and reproductive health.

Today, thanks to their years of service, PAG's community health programs continue to reach families in the remotest parts of Honduras with access to basic health services, low-cost medicines, health education, comprehensive nutritional care for children, cervical cancer screening examinations, among many other services where the local secretary of health is not present yet. Thank you, Paula and Amalia, for your service to the poor in Honduras!



Paula Vasquez providing nutrition education to a AIN-C mother and providing comprehensive care to women between the years of 1995-2000.



Paula Vasquez providing basic health check-up during a medical brigade to a Lenca Indian woman in 2021.



Amalia Dubón during a capacity building workshop with community health volunteers in the early 2000's.



Amalia Dubón is one of PAG's nurses who is also certified to perform a cervical cancer screening examination.



Beneficiary Lolita Trejo from the community of Arco, is proud of her improved house after white washing the outside walls and adding a small wooden fence for decoration.



Families organize their kitchen by having a designated place to store their pans and pots, plates, cups and other kitchen utensils. In addition, a concrete floor (instead of a dirt floor) adds to a cleaner and more hygienic environment, as well as an improved wood burning stove and a kitchen sink with access to water inside the house.



LIVELIHOOD IMPROVEMENT

Supported by Jack & Marie Eiting Foundation

In addition to our housing repair efforts, in 2021 PAG carried out ongoing actions to encourage low-income families and local rural communities to make small but important changes in their daily living by skillfully using their limited resources to improve their overall lives and living conditions, an activity inspired by the Japanese methodology, “Kaizen”.

In 2021, Over 400 families in western and central Honduras carried out activities to improve their overall livelihoods which included: white washing the outer and inner house walls (for a cleaner environment and to keep out a deadly insect from living within the adobe earth walls), organization of kitchens, community cleaning campaigns, and implementation of community vegetable gardens. Additionally, entrepreneurship activities were carried out by the families to generate family income, which include elaborating hand-embroidered tablecloths, baking homemade bread, and raising quality chickens for family consumption and for sale in their communities.



Families use local resources to bake bread, elaborate table clothes and baskets for sale in their own community in order to generate family income.



Each piglet can be sold for about \$40 USD. Families also sell pork meat in the local markets. This is a great source of income for families whose average income has been approximately \$90 USD per month from agricultural production.

SMALL ANIMALS MICRO BUSINESS PROJECTS

Supported by Church of the Brethren & Jackson Kemper Foundation

In western and central Honduras, many and diverse needs were aggravated by hurricanes Eta & Iota, further affecting the very fragile economy of extremely low-income families.

PAG's Small Animal Micro Business Projects aim at improving food security and the overall living conditions of most families who do not own much land (for farming), is poor, and does not have other income opportunities.

The participating families are provided with assistance to build the pig pens and chicken coops as well as the small animals (pigs or hens) to begin their project. Once their animals reproduce, they are required to give a grown pig or hens to a new family to help that new family start their own project. The animals can later be sold for additional family income or consumed to improve the family's nutrition (pork and chicken meat, eggs, etc.)

In 2021, 65 families (approximately 275 persons) directly benefited with their own pig breeding project (30 families) and chicken project (35 families) in six municipalities of Santa Bárbara county. These families receive ongoing training and assistance in the management and reproduction of the small animals and birds. At the end of the year, these families improved their income by selling piglets, pork and chicken meat, and eggs, with each family doubling their yearly income.



Each family received 14 hens and 1 rooster to begin their project with each hen laying approximately 24 eggs per month which the families can later sell in the local market (in addition to selling chicken meat) or for family consumption.



School children are also educated in Children's Rights.



PAG's Deborah Program receiving the Honduran National Award for Human Rights.



Our staff includes three law professionals and one professional in psychology.

DEBORAH PROGRAM—DEFENDING AND ADVOCATING FOR THE HUMAN RIGHTS OF PEOPLE IN VULNERABLE SITUATIONS

Supported by the Jackson Kemper Foundation, Mennonite Central Committee, and S.G. Foundation

Started in 1999, PAG's Deborah Program has offered free counseling services and legal guidance to victims and survivors of domestic violence to ensure that equal justice is applied and that their human rights are protected. In addition, we carry out activities to promote and defend the human rights of individuals and groups in vulnerable situations, mainly women, children, adolescents, the elderly, persons with disabilities, and those with HIV. These groups face discrimination, exclusion, and inequalities due to social, cultural, economic, and environmental factors.

Our strategy is based on a capacity-building approach where we strengthen the capacities of the local municipal governments, state institutions, and civil society organizations in legal and psychosocial topics to help them exercise their functions and respond to human rights violation cases. Additionally, we implement human rights educational fairs at the community level to inform and educate Hondurans about their rights and duties, including guidance on filing a complaint when human rights are violated.

Our area of influence includes 21 municipalities in Comayagua County, 6 municipalities in Santa Bárbara county, and 2 municipalities in Cortés county, reaching a population of more than 130,000 persons directly and indirectly per year.

In 2021, PAG's Deborah Program was recognized with the Honduran National Award for Human Rights for its valuable work in carrying out actions to promote, defend, and strengthen human rights in Honduras. We thank all our program partners for supporting our work all these years!



@programadeborahpag



During educational human rights fairs, our staff educates the local population on human rights topics including the procedure to file a complaint and which authorities or institutions to go to for support.



PAG's Scholarship Program's first meeting in 1991.



PAG's Scholarship Program has provided over 4,441 students with scholarships in the past 30 years.

PASTORAL & YOUTH SCHOLARSHIP PROGRAM



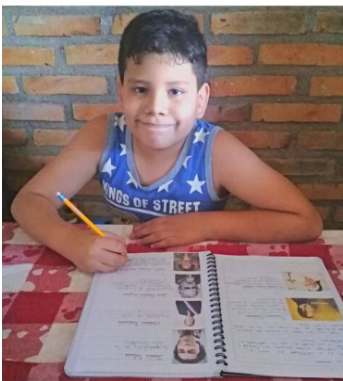
Supported by Amigos de Honduras, John Knox Presbyterian Church, International Christian Aid, and Karleen Kennedy.

Over the course of 30 years, PAG's Pastoral & Youth Scholarship Program in Tegucigalpa has become a second home and family for thousands of children living in the urban slums of Flor del Campo and its surrounding neighborhoods. PAG not only supports the education of at-risk children with scholarships, but also their development in essential Christian values, principles, and skills to help them succeed in life.

Due to the ongoing COVID-19 pandemic, school buildings in Honduras remained closed in 2021, and classes were imparted via television, radio, and online methods, posing a great challenge for students from low-income families who did not own an electronic device nor had the economic means to afford internet services.

This year, PAG continued to support 243 students from primary school, high school, and university with scholarships. This monthly scholarship provided support to our students as most of them used the money to pay for internet service and school supplies. In addition, PAG with a generous donation from the Global Food Initiative from Church of the Brethren, made available 5 desktop computers in our office in Flor del Campo to ensure that our students could attend their online classes.

We covet your continual prayers for the children and youth of Honduras. In-person classes will resume in 2022. Student's learning has been minimal via virtual classes and the ministry of education has stated that students will graduate to the next grade level even if they did not pass this year's courses. In the last quarter of 2021, PAG carried out reinforcement (tutoring) classes for students in 7th, 8th, and 9th grade, specifically in Spanish and Math courses, to better prepare them for the next grade level next year. These tutoring classes are being provided by our very own university beneficiary students who are "paying back" their scholarship by teaching younger scholarship beneficiaries.



PAG seeks to change unhealthy thought patterns and attitudes of tough, slum raised youth by promoting and teaching Christian values, self-esteem, leadership skills, among other essential topics.

“PROGRESE” MICRO CREDIT PROGRAM

Supported by PAG

Year 2020 was a challenging and difficult year for the financial sector in Honduras, especially for small businesses that do not have sufficient financial resources to bear the risks brought on by the COVID-19 pandemic. Across the country, sales were greatly reduced by the limited transportation measures imposed by the Honduran government to reduce the spread of the virus, while other small businesses remained closed for over 6 months. Credit clients defaulted on their loans which caused significant losses in our loan portfolio, which decreased by –12% in loans and –13% in clients.

The economy in Honduras still has a long way to recovering completely from the losses of this past year. It began to improve in the second quarter of 2021, but significant improvements will be more evident by the end of year 2022. On a positive note, in 2021, PAG’s micro credit program increased its loan portfolio by 5% and clients by 4%.

PAG continues to promote the development of small and medium family businesses by facilitating access to capital to families so that they can start their own family business to generate family income and improve their lives.

Testimonial

Cinthia Blanco is a 24-year-old mother of two children who began her own pig breeding project in 2019 with one sow for reproduction and two pigs for fattening (for either family consumption or sale). Now, she has 6 reproducing sows and a boar. Each sow becomes pregnant every 3 months delivering between 10 to 13 piglets each time, which are sold at 45 weeks for \$62 USD each, earning a gross income of approximately \$3,726 USD per year.

Through an online video and the collaboration from other pig farmers through a social media group, she learned various techniques to help her manage and raise the pigs. An innovative technique she recently learned is using rice husks for the floor (instead of the conventional method of a cement floor) which provides added comfort to the animals, is cost-effective, and environmentally friendly. The litter is then sold as a fertilizer at the end of each pig cycle.

Cinthia was approved for a loan in the amount of \$1,242 USD from PAG’s micro credit program, which she will use to implement another innovative technique known as the “wind tunnel”, to achieve a 20% higher yield compared to the conventional method. This innovative structure allows the animals to move freely, protecting them from extreme weather, reducing crowding, and the accumulation of ammonia in the air.



Cinthia Blanco shows her pig breeding project in the municipality of Siguatepeque, Comayagua County.

SUSTAINABLE TOURISM

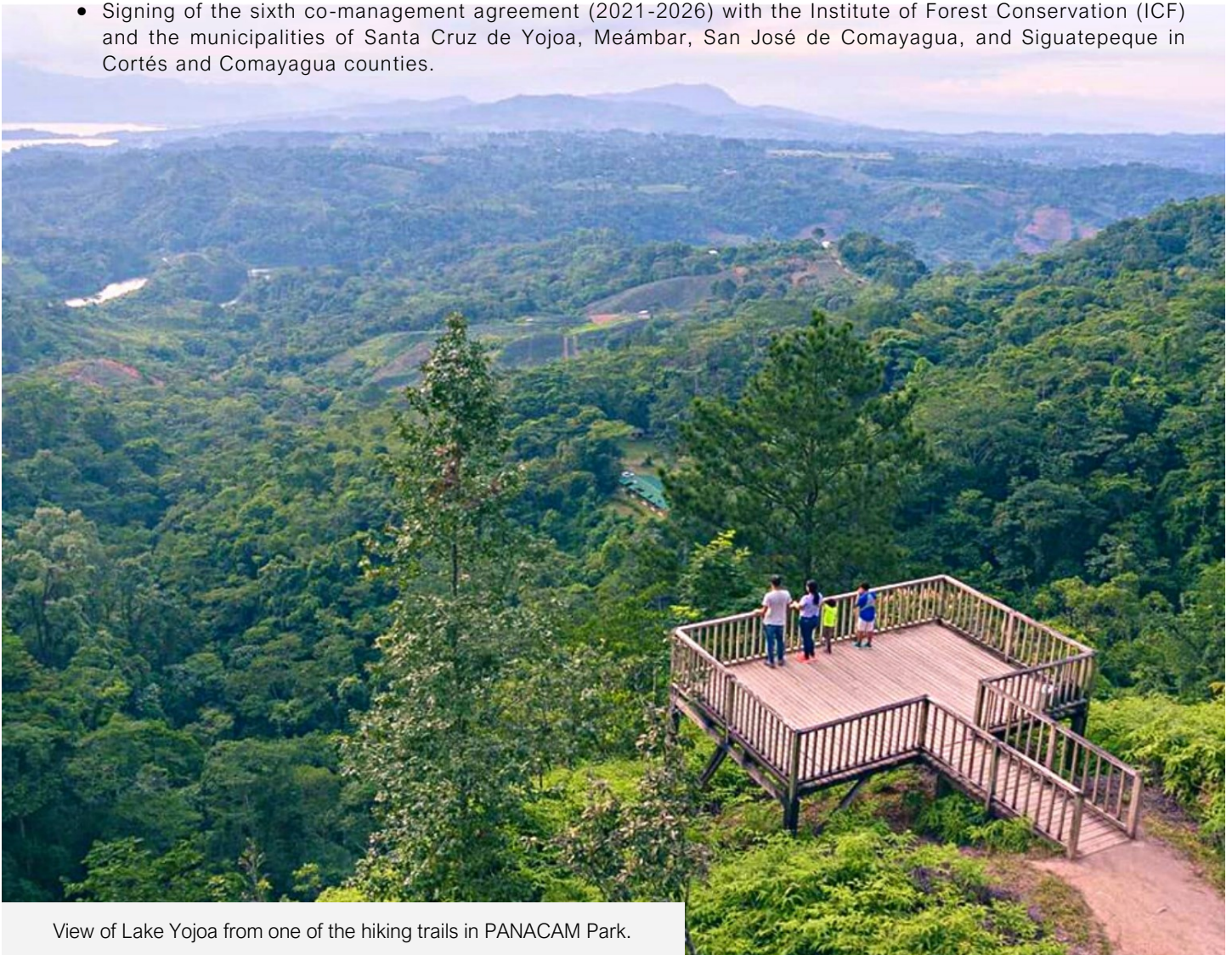
Supported by BID-ICF-SEFIN, MOCAPH-ICF, CANATURH, Roadway Concessionaire of Honduras, UICN, PANACAM Lodge, La Naturaleza Tourist Center, and PAG.

PAG has been co-managing the Blue Meambar National Park (PANACAM) since 1992, beginning with an area of 25 square kms and expanding the actual park to 316 square kms (186 square miles of area) with new limits approved this year by the Honduran congress; a task carried out by Proyecto Aldea Global over thirty years of hard work!

PANACAM has been recognized by the Honduran government as one of the best protected areas in the country. It has won several national and international awards through the years, and in 2021 was considered among the top 30 wonders of Honduras. It provides over 50% of the hydroelectric power to the country by the water it produces and stores in the park; it is a critical watershed and wildlife area.

Among the relevant activities and accomplishments of this year are:

- The organization of an Association of Water Authorities for the conservation of six small watersheds to produce more water and to improve the quality of life of families living in 22 surrounding communities by providing access to water for family consumption, production activities, and tourism.
- Reforestation of 495 acres of pine forest that were damaged by the pine beetle in 2020.
- Expanding the park's limits to 316 square kms (186 square miles).
- Signing of the sixth co-management agreement (2021-2026) with the Institute of Forest Conservation (ICF) and the municipalities of Santa Cruz de Yojoa, Meámbar, San José de Comayagua, and Siguatepeque in Cortés and Comayagua counties.



View of Lake Yojoa from one of the hiking trails in PANACAM Park.



Signing of the 6th co-management agreement (2021-2026) with ICF and the local municipalities.



PANACAM Park among the top 30 wonders of Honduras.

SUSTAINABLE TOURISM CONTINUED...

Supported by BID-ICF-SEFIN, MOCAPH-ICF, CANATURH, Roadway Concessionaire of Honduras, UICN, PANACAM Lodge, La Naturaleza, and PAG.

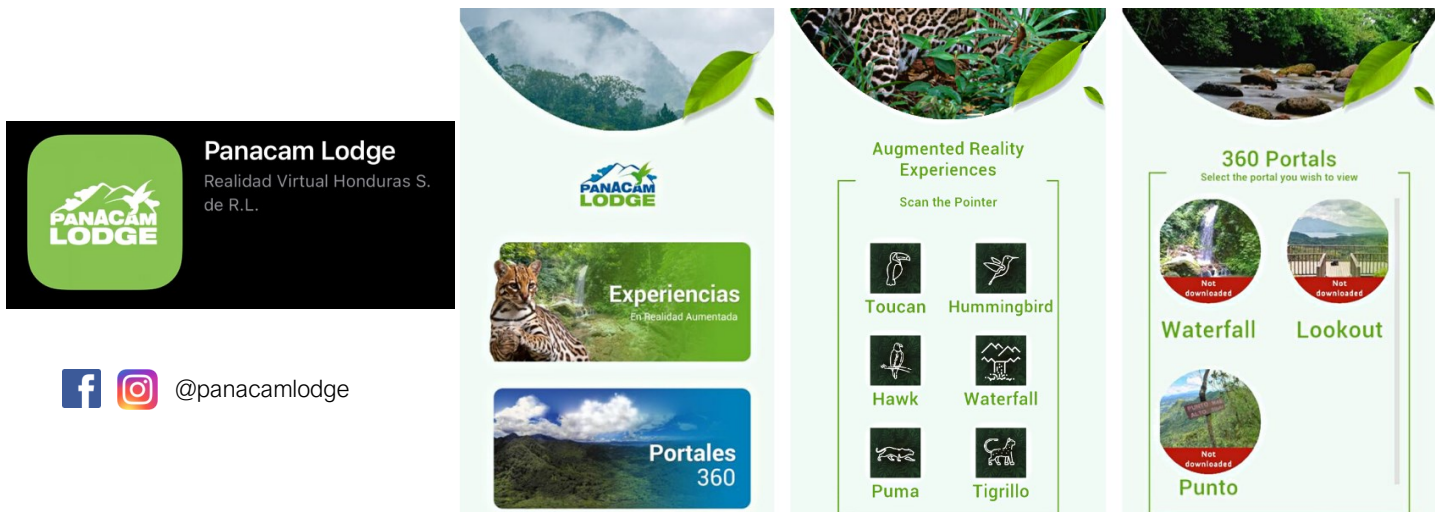
PAG established and continues to manage two businesses, the **PANACAM Lodge** and the **La Naturaleza—Tourist Center**, which play an important role in the conservation, protection, and sustainability of PANACAM Park, including the economic development of its surrounding communities by generating employment opportunities to the local population. The profit from the two businesses are totally spent in the park's protection and development.

The PANACAM Lodge offers several services such as hotel, restaurant, kayaking, hiking, birdwatching, among others to its visitors to access the impressive natural beauty the Park has to offer. PAG also provides capacity building services in environmental education and tourism to students, organizations, and corporations. This year, PAG with the support of USAID and the local chamber of tourism in Honduras (CANATURH) launched a new project called "PANACAM OPEN", where visitors have access to virtual experiences in bird watching, hiking, flora and fauna exhibition, etc. in augmented reality through the use of technology.

In addition, in coordination with the local chamber of tourism in Honduras (CANATURH), the first edition of the Chocolate Room in Honduras was hosted in PAG's La Naturaleza Tourist Center where small businesses displayed and promoted the different varieties of Honduran cacao as well as artisan chocolate products.



Over 600 visitors, including national and international tourists, attended the event where they tasted the different varieties of Honduran cacao.



Different augmented reality experiences are offered through the **Panacam Lodge** app. Make sure to download the app on your smartphone before your next visit to the park!



Alejandra Reyes, ICF's Director of Protected Areas in Honduras, enjoying the virtual experience with a Keel-billed Toucan.



A student from the forest conservation program in Honduras with a Northern Tiger Cat at PANACAM Park.



A local family using the PANACAM Lodge app for a photo with an American Lion at the park.

@lanaturalezahn

@lanaturalezahnd



La Naturaleza Tourist Center offers its visitors a variety of services and activities, including a restaurant, hotel, convention center, butterfly park, hiking trails, and a treehouse.



In addition, donations for use during emergencies are donated by Direct Relief International.



PAG has its main medicine warehouse in Siguatepeque where donations are received and then distributed to hospitals, health clinics, medicine restocking centers, etc.



IN-KIND DONATIONS

Supported by Direct Relief International, Gleanings for the Hungry, Heart to Heart International, and HOPE International.

Thanks to the generous donations from international friends, in 2021 PAG received a total of 10, 40-foot containers of medicines, medical & emergency supplies, and equipment which were distributed to 119 health centers, maternal clinics, hospitals, and health organizations in Honduras. These donations are worth approximately \$550,168 USD. Medical equipment such as wheelchairs and canes were specifically donated to individuals with limited economic resources who could not afford to purchase them locally.

PAG carried out an average of 30 medical brigades to rural communities in western and central Honduras where medicines were provided to the local population according to needs. Approximately 300 glucometer kits were donated to PAG's community owned pharmacies to provide direct care to individuals with diabetes or those who require a blood sugar measurement. Also, over 2,000 vials of Bendamustine medicine were donated to 3 local oncology centers to treat leukemia and multiple myeloma cancer.

In addition, in 2021 PAG received another container of dehydrated vegetables and oatmeal (about 40,000 pounds) from Gleanings for the Hungry to address the basic need of food for families struck by hurricanes Eta & Iota. These bags of food have benefited over 7,000 hungry families in western and central Honduras.



Donation of medicines and medical supplies to the health unit in Belen Gualcho, Ocotepeque.



Donation of medicines and medical supplies to the Santa Teresa hospital in Comayagua.



Preparing a donation delivery to one of PAG's regional medicine restocking centers in Comayagua.



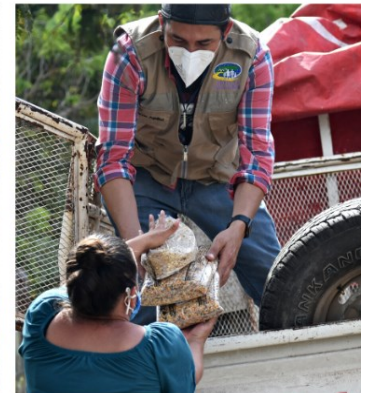
Juan Rodriguez, a prostate cancer patient, smiles after receiving a wheelchair for the first time.



Receiving the second food container from Gleaning for the Hungry at our regional office in Siguatepeque.



Distribution of food bags to rural families in western and central Honduras.



Other donations included hygiene products for families affected by hurricanes Eta & Iota.



Families who lost their house and their possessions were provided with kitchen and dining utensils in addition to the food bags.

PROYECTO ALDEA GLOBAL (PAG) BALANCE SHEET JANUARY—OCTOBER 2021



<u>Current Assets</u>	Total
Cash and Bank Accounts	\$2,768,688
Micro Credit Loans Given Out	\$5,007,261
Other Internal Accounts Receivable	\$159,918
Inventory - In Kind goods - No Cash	\$98,478
Total Current Assets	\$8,034,344
Net Property, Furniture & Equipment	\$1,635,419
Total Assets	\$9,669,763
<u>Liabilities</u>	
Accounts Payable	\$292,268
<u>Fund Balance</u>	
At the beginning of the year (Cash + In Kind Inventory)	\$8,197,758
Excess of Revenue Over Expenses During the Year	\$1,179,738
TOTAL FUND BALANCE AND LIABILITIES	\$9,669,763

REVENUE AND EXPENSES STATEMENT

January to October 2021

<u>Revenues</u>		Total
Cash Donations		\$2,307,235
Interest Earned on Micro Credit Loans Given Out		\$1,399,461
Other revenue (Rent, Sales Inventory, Other)		\$295,695
Material Aid Medicines & Emergency Supplies Received		\$550,168
TOTAL REVENUES		\$4,552,559
<u>Expenses</u>	%	
Agro-Industrial Program	22%	\$730,376
Community Health Care Programs	12%	\$405,915
Flor del Campo Scholarship & Community Library	2%	\$52,373
<u>Civil Society, Education, Human Rights</u>		
CCM, S.G & Kemper Foundation: Deborah Program	1.8%	\$59,445
<u>PANACAM Park & Other Development Projects</u>		
PANACAM Park Development Project	7%	\$226,045
Road Construction, Improvements, Repairs	1%	\$42,202
USFS: Educating The Youth In Forest Conservation	10%	\$321,456
"Progrese" Micro Credit Program Expenses	15%	\$499,069
Ferry Boat - Transportation Service	1%	\$18,140
Emergency Relief - Food & Housing Projects	10%	\$350,443
Expenses-Material Aid, Medicines & Others:	14%	\$457,944
Headquarters Office Costs-Tegucigalpa	6%	\$209,413
Total Expenses	100%	\$3,372,821
NET EXCESS OF REVENUE OVER EXPENSES		\$1,179,738

**PAG's audits and financial reports are available upon request. Audited by Fortin Lagos & Associates (Honduras).

2021 FRIENDS & DONORS

Aaron & Dina Schumer	David & Priscilla Benner	Hoke Thomas	Kenneth & Janet Blough	Perfect Eyebrows	Tim & Mary Thomas
Aaron Wilder	David Alverson	HOPE International Canada	Kevin & Elizabeth Hopkins	Peter & Jody Dull	Tim Geisse
Abby Shaffer	David Podrasky	HOPE International USA	Kristin Holland	Peter & Julie Stiles	Timothy & Linda Buchanan
Agua Pura Para El Pueblo	David Ray	Howard Dickinson	Kyle Fiore	Peter Bohlen	Tire Hill CoB
Al Lindrose	David Utzinger	ICF - FAPVS Areas Protegidas	Larry & Linda Williams	Peter Durr	Todd & Erin Grimm
Alan & Kay Bennett	Dean Wintermute	Ignacio & Cristina Diego	Larry & Rev. Nila Cogan	Phil & Karen Covell	Todd & Janet Gibson
Albert & Kathleen Stankan	Deborah & Anjan Purkayastha	International Christian Aid	Larry Hemminger	Phil Arneson	Tom & Paulette Zarecki
Alex Morse	Deborah Strom	Ira Richards	Lester & Doris Jacobs	Pleasant Hill CoB	Tom & Susan Carter
Allred Gving Fund	Dena Kaplan	Jack & Donna Thomas	Levi Thomas	R.A.K. Trust	Tom Strombeck
Amigos de Honduras	Denise Peine	Jack & Marie Eiting Foundation	Lily Powelstock	Ramon & Annie Gupta	Tonja Reischl
Amity Lumper & Derek Low	Derrick & Rebekah Charles	Jackson Kemper Foundation	Linda Betanco	Ray Dunmeyer	Travis Jones
Amy Lehnhoff	Direct Relief International	Jacob Olinger	Linda Hannon	Reid S. Maust	Trinity Episcopal Church
Andrew & Heidi Dryden	Don & Sarah Ray	James & Basey Patterson	Linda Kay Basset	Reuben & Clarine Kvamme	UICN
AnnMary Dykstra	Donald & Donna Heisey	James & Colleen Cooper	Linda Thomas	Rev. Robert & Ruth Bayley	USAID Acceso - Fintrac
Argidius Foundation	Donald & June Bruner	James & Damaris Barborak	Lindsey Whisonant	Richard Miller & Markus Lipfert	USAID Alianzas de Mercado
Arthur Thomas	Donna & Ole Myrdal	James & Kathryn Pasternak	Lois Mendezoff	Richard Petcher	USAID Proparque
Arthur W. Harrigan, Jr.	Donna Croft	James & Margaret Townsend	Lorna Wiggins	Richard Ward Loudis	USFS
Auburn Methodist Church	Donna J. Koerker	James & Teresa Dunn	Lorraine Williams	Richard Weaver	Victoria M. Seitz
Ballenger Family Partnership	Donna Koerker	James & Tressa Petersen	Lucas Wall & Maria Cantoni	Riley Arneson	Victoria McDonald
Barbara & Karl Striebel	Dorothy G. Maust	James Neal	Luke Goebel	Robert & Amy Shaw	Victoria Wong
Beachdale CoB	Drik & Dixie Havlak	James Nealon	Magdalena Wallhoff	Robert & Christie Zoba	Virgil Toyer
Berkey CoB	Dryden Family Trust	James Styer	Maple Springs CoB	Robert & Elaine Meyers	Wabash Presbyterian Church
BID - SEFIN	Duane Bland	Janet N. Gold	Marcela Gutierrez	Robert & Sharon Davis	Way of Hope Christian Fellowship
Bill & Jeanette Hunsberger	Dull Homestead, Inc.	Janice & Kurt Lyle	Maria Amalia Wood	Robert Terry Gift Fund	Wayne & Geraldine Swan
Bill & Laurie Essig	Dwight Harriman	Jasam Foundation	Marian Kunst	Roger & Diane Morton	William & Audrey Wenger
Bill & Marie Miller	Eileen Stahl	Jay Wittmeyer	Marianne Stiles	Roger & Joy Neubauer	William & Gale Robertson
Bill & Rona Hemminger	Elaine & Denny Cherry	Jebney Lewis	Marie Miller	Ron & Nancy Oldenkamp	William & Mim Dagen
Bill & Shirley Tillman	Erik Neilson	Jeff & Kathy Shaffer	Mark & Cheryl Roberti	Ronald & Adrienne Punako	William J. De Nies
Bill & Sonya Horsley	Ernie & Sandy Chapin	Jeff & Margaret Boshart	Mark & Haydee Allred	Ronald & Barbara Huffman	William Shroyer
Bill & Sue Schlegel	Erwin Garzona	Jeff & Nacy Evans	Mark & Laurie Sauerwein	Ross Cornelius	Woodbury CoB
Bill Horsley	European Union	Jeffrey & Marjorie Lansdale	Mark & Linda Eilers	Roy & Karen Lepper	World Accord - Canada
Bill Miller Equipment Co.	Evan Keller	Jeffrey Rettman	Mary Blackwell Kilby	Roy Winter	
Bob & Karen Tait	Extra Mile Ministries	Jennifer Greer & Robert Gandy	Mary C. Randsdell	Ruby & Jay Mader	
Brent Buchanan	Food Resource Bank	Jens Molbak	Mary Jo Leonardson	Rudolf Lamprecht	
Brian Rudert	Frank Caropreso	Jerry Gray	Mary Luttrell & Patricia Helmstetter	Rudy & Trish Eiting	
Bruce & Rosina McGiver	Fukumai Hauser	Jesse & Mary Williams	Matthew & Heather Thomas	Rummel CoB	
Bruce McIvor	Fundación Perstalozzi	Jim & Rhona Wuth	Matthew P. Saul	Russell & Catherine Jones	
CANATURH - Honduras	Gale Batchellor	Joan Brown	Medical Teams International	Sandra Harlan	
Carl Yoder	Gary & Dixie Baker	Joe & Linda Peritore	Melva Altamirano	Scalp Level CoB	
Carol Hodgen	Geiger Church of the Brethren	Joel & Christy Shaffer	Mennonite Central Committee	Scott & Lisa Grayson	
Carolyn Cooper	Geisse Foundation	John & Britta Hunt	Mercy Corps International	Scott & Lorna Wallick	
Caropreso and Friends	Georgina Brooke Williams	John & Charlene Potts	Meyersdale CoB	Second Union Church of San Juan	
Center Hill CoB	Georgina Panting	John & Joyce Warren	Michael & Gwenn Garmon	SAG Honduras	
Chad, Randi & Micah Allred	Gerry Walters	John & Kara Wilkin	Michael Lane	SG Foundation	
Cheryl Hoffner	Gleanings for the Hungry	John & Lana Crowell	Miguel Mejia	Shannon & Tillie Duncan	
Cheryl Kepshire	Glen & Rebecca Gordon	John & Marilyn Dryden	Mike & Linda Wray	Sharon & Alan Bennett	
Chester & Olga Thomas	Glenna Thompson	John & Nancy Serratore	Millard & Jean Thomas	Shirley Peace	
Chester Cable	Globerunners, Inc.	John E. Olson, Trustee	Misión China-Taiwan en Honduras	Sidney Powelstock	
Chris & Heather Schueler	Gloria Lomax	John Johnson & Elouise Schumacher	Molly Comstock	Somerset CoB	
Christian Elliott	Gobierno de Japón - SAG	John Knox Presbyterian Church	Mona Lore	St. Luke Lutheran Church	
Christina Caropreso	Grant & Marsha Jensen	John Michael Talbot	Myrna Slick	St. Thomas Lutheran Church	
Christina Ravinet	Greenwich Investment Management	John Nitardy	Nancy Myers	Steve & Elisabeth Potts	
Christine Shroyer	Greg & Shannon Whitney	Jonathan & Lorraine Williams	Natasha Landerholm	Steve Matse	
Church of the Brethren, Elgin	Gregory & Judy Croner	Jonathan McPeters	Network for Good	Steven & Kim Butterfield	
Church World Service	Guenter & Karen Kass	Joni & Lawrence Sell	Nichole & Luis Bonilla	Suarez-Jakobsen Investments	
Clifford Dick	Gwaltney Dental	Jorge Betanco	Nicole Lansdale	Suzanne and Andrew Zulauf	
Concesionaria Val de Honduras	H.D. Swartzendruber	Joseph & Kay De Vita	None Will Perish Foundation	Tearfund UK	
Coventry CoB	H.O. Woltz II	Joseph Valentine	Oakland Christian United Church of Christ	Ted & Deborah Clum	
Dale & Gloria Holder	Haley Ballast	Joseph Yoder	Oliver Yackley	Telford & Philomena Thomas	
Dan & Marie Ruzbasan	Harry De La Cruz	Julie Knight	Omar & Rachel Soto	Terry Fielder	
Dan O'Neill	Heart to Heart International	Junko Gussman	Pamela Bickford	The Kimmel Family	
Darrin Yoder	Heidi Battaglia	Karen Kass	Pamela Grattan	The Mustard Seed Foundation	
David & Connie Befus	Heidi Gurule	Karleen Kennedy	Paul & Mary Lehman	Thomas & Beverly Pomroy	
David & Donna Thomas	Helen Stowers	Katherine Sterling	Paul Nitardy	Thomas & Diane Bridge	
David & Joann Beaudreau	Herman Felstenhausen	Kathryn Eileen Bluhm	Paul Zommers	Thomas & Patricia Swartz	
David & Katharine Pruet	Hillside Pilgrim Class	Kathy Troyer	Pearl Church	Thomas & Sue Waggener	
David & Lucia Gill	Hillspring Church	Ken & Nataly Koenig	Peñasquitos Lutheran Church	Thomas Mennonite Church	



Proyecto Aldea Global (PAG)

PO Box 1149

Tegucigalpa, Honduras

www.paghonduras.org

+504 2239-8400



@paghnd



@pag_honduras

Donations for IRS deduction can be sent to PAG by donating online through PayPal or writing a check to Amigos de Honduras and mailing it to:

Amigos de Honduras, PO Box 98293. Seattle, WA 98198-0293

*PAG in joint venture with Amigos de Honduras. 100% of all funds received through Amigos de Honduras go directly to PAG.



Scan the QR Code to
donate online through
PayPal using a credit
card.