



2020

**AN OVERVIEW OF PAG'S  
DEVELOPMENT PROGRAMS AND  
EMERGENCY RELIEF ACTIVITIES  
IN HONDURAS**



*Empowering families to reduce poverty and build just, peaceful,  
and productive communities based on Christian values.*



[www.paghonduras.org](http://www.paghonduras.org)



+504 2239-8400



Col. Florencia Sur. Avenida Los Pinos. Casa 4044.  
Tegucigalpa, Honduras

## TABLE OF CONTENTS

3	<a href="#"><u>Letter from the Director</u></a>
4	<a href="#"><u>Overview</u></a>
5	<a href="#"><u>Food Distribution</u></a>
10	<a href="#"><u>Medical Brigades &amp; Medicine Donation</u></a>
14	<a href="#"><u>Construction of Houses &amp; Repairing Community Water Systems</u></a>
18	<a href="#"><u>Development Programs: Agro-Industrial Program and Food Security in Western Honduras</u></a>
22	<a href="#"><u>Development Programs: Community Health Programs in Western &amp; Central Honduras</u></a>
25	<a href="#"><u>Development Programs: Building Futures Program</u></a>
26	<a href="#"><u>Development Programs: Deborah Program—Defending &amp; Promoting Human Rights</u></a>
27	<a href="#"><u>Development Programs: Microcredit Program &amp; Pastoral &amp; Youth Scholarship Program</u></a>
28	<a href="#"><u>2020 Financials</u></a>
29	<a href="#"><u>2020 Friends &amp; Donors</u></a>



## LETTER FROM THE DIRECTOR

Dear Friends,

Year 2020 will be remembered as the most difficult of the 46 years I have lived in Honduras. The COVID-19 pandemic and the two major hurricanes greatly affected the economy of the country, increasing unemployment, poverty, and social problems. Honduras has no welfare systems for its citizens (in comparison to the USA) so, it is very difficult for older couples, single mothers with children, families, and handicapped persons without any income to find a way to exist during this difficult time.

The following report summarizes PAG's emergency relief activities in response to the COVID-19 pandemic and the enormous destruction caused by two major hurricanes, as well as a summary of our development programs' activities in 2020. This rebuilding work will continue for many more years as the needs are great and overwhelming.

Thank you for your generous support and for coming alongside us to aid the most destitute families during one of Honduras' most challenging years. We appreciate your ongoing prayers and support.

Thank you!



Chet Thomas  
Executive Director







Entire communities in the Sula Valley were under water after the heavy rains of Eta & Iota.

## OVERVIEW

The unprecedented events of 2020 brought a greater strain on poor families who were already facing many challenges related to COVID-19, unemployment and poverty. Because of COVID-19 beginning in March of 2020, Honduras was under strict lockdown that lasted over 7 months with strict movement restrictions in place and 90% of businesses across the country were shutdown, except for essential government health services, gas stations, and food stores. Low-income families who live on what they earn on a daily basis (i.e. selling tortillas or other prepared foods in the streets, selling second-hand clothes in the market, bus or taxi drivers, etc.) became unemployed without any source of income to buy food for their families. In November of 2020, hurricanes Eta & Iota brought unimaginable and devastating damages across the country when families were still recovering from the 7+ months of confinement. These natural disasters left at least 700,000 families across Honduras in dire calamity with approximately 186,000 families living in provisional shelters. Fields in western Honduras were washed from the hillsides damaging entire crops of farm families who depend on their crops for food and income. Hundreds of community water systems were also damaged and destroyed by floods and landslides, leaving thousands of families in remote communities without direct access to clean potable water. More than 180,000 families continue to live in damaged communities with few access roads after bridges collapsed and roads became full of mud, rocks, and fallen trees.

It will be years before our local brothers and sisters fully recover from the adversities of year 2020. In the meantime, we continue to be God's hands and feet by supporting displaced families with food, construction of houses, repairing community water systems, and providing basic health services through medical brigades to rural families in central and western Honduras. We covet your prayers and your ongoing support.





## FOOD DISTRIBUTION

From the start of the COVID-19 pandemic, PAG began attending the immediate needs of families with family food bags (in some cases a cash donation of \$25) and hygiene and medicine kits. Due to the movement restrictions where citizens were not allowed to travel freely to other communities and towns, PAG distributed a cash donation of \$25 to help families buy food locally.

The two major hurricanes displaced hundreds of thousands of families in northern and western Honduras, many of them losing their houses and everything they owned. PAG organized a marathon to collect food, blankets, sleeping pads, health supplies and bottled water to distribute to more than 10,000 families, mainly in central, northern and western Honduras. PAG brought together the Municipality of Siguatepeque in Comayagua county but mostly local service organizations like the Lions Club, Rotary Int'l., Protestant and Catholic churches, schools, and community action groups who filled up trucks, tractor trailers, 4 WD, and military trucks to move food and supplies. Hundreds of volunteers gathered at a large high school gymnasium in town where the local groups could drop off food, clothing, blankets and sleeping pads and other donations, which then were sorted and packed into family portions. All of PAG's staff and field workers were involved in packing family food supplies and delivering them to where the needs were greatest.

PAG also received a container loaded with forty thousand pounds of dehydrated vegetables and oatmeal from Gleanings for the Hungry, for families living in provisional shelters and those affected by the two hurricanes in Honduras. This storable food is perfect for emergencies since it only requires preparation on site to feed hungry families. Our staff from our community health program in central Honduras began its distribution and teaching the local families how to prepare delicious and nutritious recipes with them. Overall, in 2020 PAG has supplied thousands of family food bags, hygiene kits, blankets, among other essential supplies to more than 9,518 families in central and western Honduras. For year 2021, PAG will continue to respond to the food needs of hungry families while we have support.





243 families from PAG's Pastoral & Youth Scholarship Program received a cash donation to help them buy food locally. Most of our scholarship beneficiary students come from single parent homes who live in the urban slums of Flor del Campo and who live on what they earn on a day-to-day basis. With the complete shutdown of the country for over 6 months, these families had no income to feed their families.



Due to the movement restrictions, PAG's staff could not travel to communities to deliver food bags, so a cash donation was given to hungry families to help them buy food locally.



During the first few months of the COVID-19 quarantine, PAG's regional staff in Siguatopeque began delivering family food bags with fresh vegetables to the families in affected communities nearby.





Family food bags, clothes and blankets, children's kits (coloring books, crayons and toys), and health & hygiene bags were put together by hundreds of community volunteers and PAG's staff to distribute to the families displaced by the hurricanes.



Several trucks were filled with the prepared bags to begin the distribution in rural and remote communities most affected by flooding and landslides.



PAG's staff traveled to more than 100 remote communities in central and western Honduras to deliver the much needed humanitarian relief to families affected by the COVID-19 pandemic and the hurricanes.





Humanitarian aid also went to farm families in western Honduras who faced major economic loss after their crops could not be sold and transported to major buyers due to the strict movement restrictions of the COVID-19 pandemic.



Hungry farm families received a one-week's worth family food bag while they managed to replant crops.



PAG will continue to distribute food in year 2021 to help families get back on their feet after the unforeseen events of 2020.





Families living in provisional shelters, who lost their house and all their possessions, were also provided with sleeping pads, blankets, second-hand clothes, and shoes. Children were given a small bag with candy, coloring books, crayons, and toys to provide them with some fun activities amidst their difficult circumstances.



PAG received a container from Gleanings for the Hungry, with 40,000 pounds of dehydrated vegetables and oatmeal (and a second container will arrive to Honduras in February of 2021). Families use local produce and add the dehydrated vegetables for a nutritious and delicious stew. These food bags are being distributed to an additional 7,000 families in central and western Honduras.



## MEDICAL BRIGADES & MEDICINE DONATION

During the first few months of the COVID-19 pandemic in Honduras, PAG purchased a considerable amount of medicine and medical supplies to resupply its 500 community owned pharmacies in central and western Honduras. Individuals living in extremely rural and remote communities do not have quick access to a health facility. But, with PAG's community owned pharmacies, thousands of these families now have direct access to basic health services and to low-cost medicines within walking distance of their home. During the health crisis, hospitals and clinics have been prioritizing COVID-19 related cases and hundreds of individuals with hypertension, diabetes, and other chronic diseases are not getting their on-time check-ups nor medicines. PAG, in response to the health needs of these individuals, has distributed medicines to more than 2,000 diabetic and hypertensive individuals in central Honduras who also received a two-month's worth of medicines.

In addition, medicines, hygiene products, and medical supplies worth L. 3,347,090 (\$137,672 USD) were donated to more than 134 health centers, health organizations, and medical facilities in central and western Honduras.

As a response to the health needs of thousands of families displaced by hurricanes Eta & Iota, PAG's community health program along with a local network of health volunteers, are carrying out medical brigades to attend the health needs of rural families living in extremely remote communities, including screening tests for women of reproductive age for early detection of cervical cancer.





Medicine donations including medical and hygiene supplies are donated to local health centers in western and central Honduras.



With the COVID-19 pandemic, it was necessary to also donate biosafety equipment to ensure that health professionals have the proper equipment to protect themselves and those they attend.



\$137,672 worth of medicines, hygiene products, and medical supplies were donated in 2020.





Among the most prevalent population seeking medical care were children, women, and the elderly.



In coordination with the local Secretary of Health, children were vaccinated according to their individual records. Adults with chronic diseases, diabetic patients for example, were also examined.





A local dentistry volunteer provided children with a basic dental check-up and cleaning.



Our medical brigades have been possible thanks to the volunteer work of local medical students and other health technicians.



PAG's staff ensures that patients understand how to properly take the prescribed medicines.





## HOUSE CONSTRUCTION

Honduras is highly vulnerable to climatic changes resulting in severe droughts, heavy flooding, and hurricanes affecting the population who is already in a vulnerable situation.

After heavy rains hit western Honduras on July, several Lenca Indian families living in the municipality of Belen Gualcho in western Honduras, lost all their possessions, including their house, after landslides washed away their house. With the generous contribution of a donor and the municipality's support, four families now have a dry and clean place to call home.

In the first two weeks of November, two major hurricanes (Eta & Iota) brought more devastating damages, especially in northern and western Honduras, causing several thousands of families to evacuate and find provisional shelter in school buildings and churches until flooding in their communities subsided. Houses were destroyed by landslides while others became filled with mud, damaged by fallen trees and rocks, PAG has initiated construction activities to benefit more than 45 families in 2021 with a new house, with plans to benefit more families as funding allows.

## REPAIRING COMMUNITY WATER SYSTEMS

In 2021 with the support of the local municipalities and the communities, PAG will be repairing more than 80 essential community water systems which were damaged by hurricanes Eta & Iota to restore access to clean water to families living in rural communities in central and western Honduras.





Beneficiary family: Francisco Monroy from the municipality of Belen Gualcho.



Beneficiary family: German Monroy from the municipality of Belen Gualcho. These families also have access to a functioning bathroom next their house.



Beneficiary families: Bertaly Aquino and Israel Cruz from the municipality of Belen Gualcho.





PAG is constructing basic low-cost housing to benefit families in central Honduras who were displaced by the hurricanes. One model house is made of prefabricated concrete columns, steel roof, concrete floor, wooden doors, a bathroom, and a provisional strong plastic covering of the walls (which the family will have to replace eventually with concrete block walls) so that the family can move in soon. Approximate cost is \$2,000.



This second model house is made entirely of metal, concrete floor, steel roof, a bathroom, and wooden doors. Approximate cost is \$2,300.





The local inhabitants removing fallen trees and rocks that damaged their community water system.



PAG is providing the communities with pipes to repair their community water systems.





## DEVELOPMENT PROGRAMS

Honduras was under strict quarantine & curfew measures for over 6 months with 90% of all businesses and roads closed. The national police and military police were employed in the streets to enforce the government's regulations. PAG was obligated to stop all field activities and our offices were closed and almost 100% of our staff was working from home. The implementation of program activities was limited as free movement to nearby towns and cities was not allowed.

The following is a summary of our development programs activities:

### Agro-Industrial Program and Food Security in Western Honduras

In western Honduras, the agricultural sector represents a fundamental pillar of the economy. With the COVID-19 pandemic and the effects of hurricanes Eta & Iota, food harvest was negatively affected by 80% in 2020. The movement restrictions lasting over 6 months and the damages in infrastructure and roads, hindered the proper transportation of vegetables from field to the markets. In addition, crops that were ready for harvest were heavily flooded after the passing of the hurricanes, resulting in major economic loss for farm families who depend on their crops for income and food security. In like manner, the production of vegetable seedlings in 2020 was significantly reduced as farmers did not have the economic resources to purchase them for planting and there was a decrease in demand for vegetables from buyers as a result of the unforeseen events of 2020.

However, agricultural production and sales began to improve during the third and fourth quarter of 2020. Total vegetable sales for 2020 were of 1,410,672 pounds to formal and alternative markets, (about 300,000 pounds less compared to the sales in 2019) and total vegetable seedlings produced in 2020 total 2,688,820 seedlings.





Several communities across Honduras had restricted the access to visitors from other communities as a result of the COVID-19 pandemic. PAG's staff would drive to the border of a community to deliver bags of vegetables to another truck waiting at the border. Then, the receiving truck would travel to the border with another community to deliver the vegetables until they reached its destination.



Left photo: Farmer Jose Maria in his flooded field after hurricane Eta's passing.  
Right photo: local inhabitants in western Honduras removing fallen trees and rocks obstructing access to their community.



Farmers in western Honduras in their fields after flood waters subsided which damaged 100% of their corn crops.





Vegetable seedling production increased during the third and fourth quarters of 2020 as farmers began planting new crops.



Farm families planting crops such as beans, peppers, and lettuce.



Pepper, tomato, and lettuce harvest.





Technical assistance visits resumed during the third and fourth quarter of 2020, with PAG's staff following proper biosafety measures such as wearing a face mask and avoiding more than 5 persons inside an enclosed space such as the vegetable greenhouses.



Standardization and classification of vegetables.





During the beginning of the COVID-19 quarantine, PAG ensured that its 500 community owned pharmacies were stocked so that that local families had access to essential medications.

## DEVELOPMENT PROGRAMS

### Community Health Programs in Western and Central Honduras

PAG's Comprehensive Nutritional Care for Children in the Community (AIN-C) was one of the most difficult activities to implement during the months of strict curfew and quarantine measures due to the COVID-19 pandemic since the local authorities prohibited the gathering of groups of people for any particular reason. Instead, PAG's health volunteers provided individualized follow-up phone calls and when possible, in-person visits to mothers to monitor and evaluate their children's nutrition.

PAG's community owned pharmacies became even more essential as rural families could not travel to other communities or cities for medical attention and to purchase medicines and hygiene supplies. In western Honduras, a total of 42,015 primary health care attentions were provided through the 81 community owned pharmacies and 133,939 health care attentions through the 368 community owned pharmacies in central Honduras.



PAG's AIN-C growth control meetings were few. However, through individual follow-up phone calls and in-person visits, approximately 700 children's growth was monitored and evaluated by PAG's health volunteers.





Health volunteers being trained in health related topics to improve their knowledge and skills in order to provide good quality health services.



Health volunteers were also educated in COVID-19 related topics so that they could educate the local population as well and therefore, stop the spread of this virus.



Individuals with chronic diseases, high blood pressure and diabetes for example, struggled to receive proper medical attention and medicines since health clinics were prioritizing COVID-19 related conditions. PAG's community owned pharmacies provided them with a basic health check-up and a two-month's worth of medicines.





One of PAG's community health program's activity includes providing rural women with a cervical cancer screening test.



PAG is increasing its efforts to reduce female mortality by providing women in rural communities with a screening test for early detection of cervical cancer. More than 750 women from 21 communities in Comayagua county will be examined in 2021.



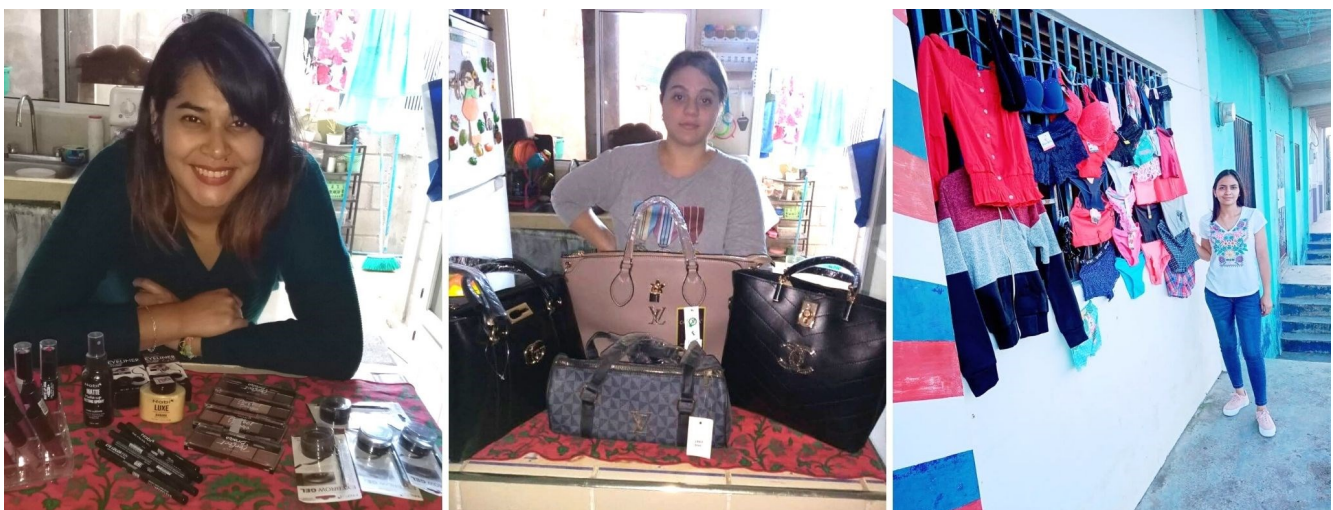


## DEVELOPMENT PROGRAMS

### Building Futures Program

The Building Futures Program was initially designed to train at-risk youths (ages 18-30) living in the urban slums of Flor del Campo in basic technical and life skills to help them find and retain employment. After each youth completed the trainings, PAG established a mentorship component where youths had individualized teaching on how to prepare a resume and how to prepare for a job interview. However, with the majority of businesses closing due to the strict curfew and quarantine measures, employment opportunities were extremely limited if not, non-existent. PAG had to adjust its program activities where instead of supporting youths in job placement activities, they would be trained in entrepreneurship activities to prepare them to own and run a small business for family income. Due to the restrictions, trainings were imparted through online methods, such as virtual meetings. After each youth finished the three-week training, they were provided with seed capital to help them start their own small business.

A total of 125 at-risk youths were trained.



Some examples of small businesses started by the youth participants were: selling food (tortillas, bakery goods, and prepared foods such as tacos, hamburgers, etc.), cosmetic and beauty products, clothing, undergarments, among others.





Training events were held, following the standard biosafety measures, in human rights , emotional intelligence, child abuse, domestic violence, among other topics. Reaching approximately 1,100 members of civil society organizations, local governments, and justice operators.

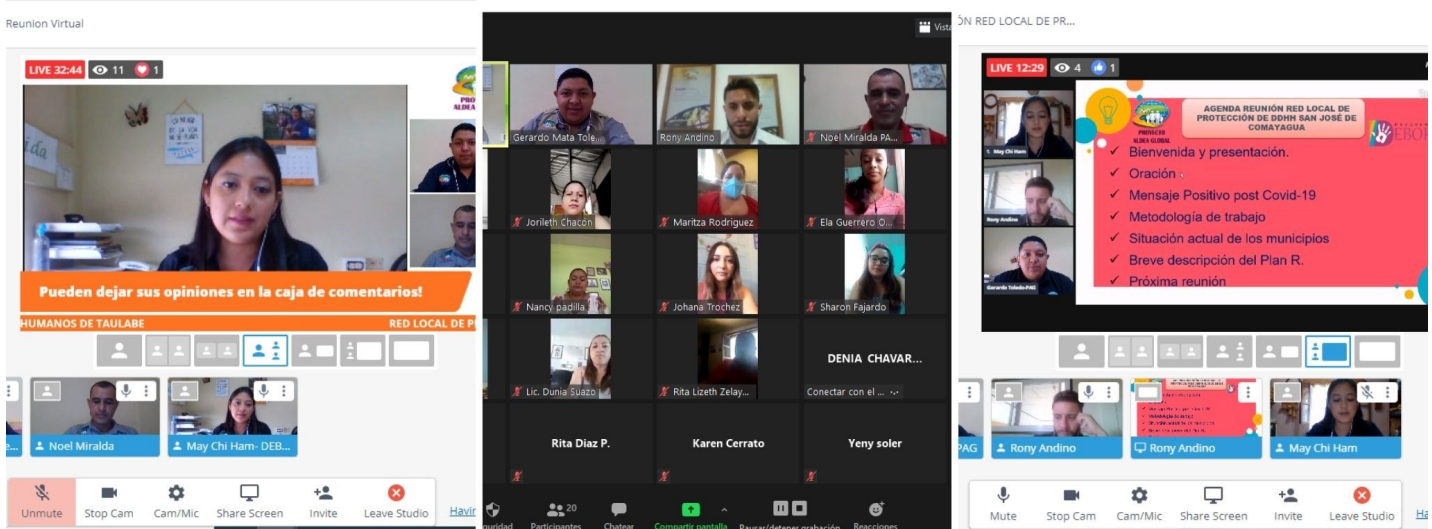
## DEVELOPMENT PROGRAMS

### Deborah Program—Defending and Promoting Human Rights

PAG continues its partnership with members of the local government, other civil society organizations, and justice operators to defend and promote the human rights of groups in vulnerable situations, mainly women, children, the elderly, people with HIV, and people with disabilities.

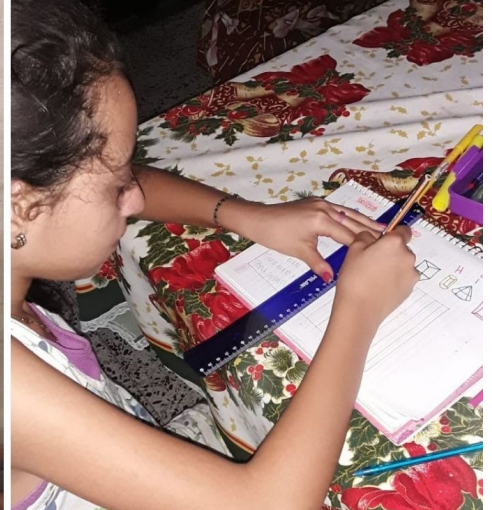
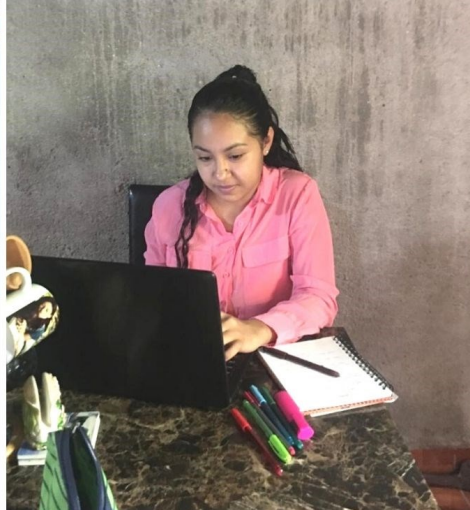
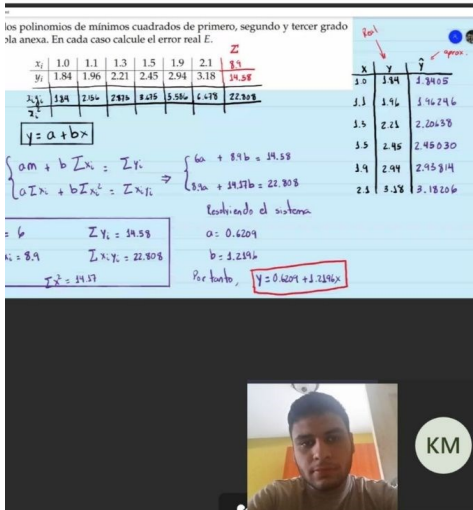
With the COVID-19 restrictions in place, several of the training events planned for 2020 were streamed online instead of face-to-face. The receipt and investigation of human rights violation cases is experiencing delay of approximately 3 months due to the complete shutdown of the country as judges and courts of peace were not attending cases during the strict quarantine that lasted over 6 months.

Our program increased its virtual activities to promote human rights awareness and to inform the local population the process to file a complaint when human rights are violated.



Online educational webinars were streamed reaching approximately 11,800 individuals with information regarding human rights and procedures to file a complaint. Virtual meetings were also implemented due to the COVID-19 restrictions.





Several of our scholarship beneficiaries continued their classes via online methods.

## DEVELOPMENT PROGRAMS

### Microcredit Program & Pastoral & Youth Scholarship Program

PAG's microcredit program suffered great losses due to the COVID-19 pandemic and the general quarantine of the entire country which in turn affected PAG's scholarship program. The interest earned from loans was greatly reduced and affected the income to help pay for some of the scholarships for our beneficiary students in Flor del Campo. Our Microcredit Program was reduced with a loss of customers and money which limited the number of loans given out. In addition, no interest was earned between March and December of 2020 on loans that had already been given out. PAG is struggling to recover five million dollars of microcredit funding as thousands of the program's beneficiaries are greatly behind in their loan payments because of the country economic shutdown and the loss of thousands of jobs.



Family small businesses, such as those selling prepared foods in the streets, selling second-hand clothes, furniture making, among others, faced economic loss when their businesses remained closed for over 7 months due to the COVID-19 pandemic.





# Proyecto Aldea Global - BALANCE SHEET

January to December 2020

## Current Assets

	Total
Cash and bank accounts	\$2,036,987
Micro Credit Loans given out*	\$4,518,260
Other internal accounts receivable	\$106,677
Inventory - In Kind goods - no cash	\$102,456
<b>Total Current Assets</b>	<b>\$6,764,381</b>
Net property, furniture & equipment	\$1,526,415
<b>TOTAL ASSETS</b>	<b>\$8,290,795</b>

## LIABILITIES

Accounts Payable	\$308,158
------------------	-----------

## Fund Balance

At the beginning of the year (Cash + In Kind Inventory)	\$7,608,841
Excess of Revenue Over Expenses during the year	\$373,796
<b>TOTAL FUND BALANCE AND LIABILITIES</b>	<b>\$8,290,795</b>

## REVENUE AND EXPENSES STATEMENT

### REVENUES

	Total
Donations	\$1,959,831
Interest earned	\$1,240,723
Other revenue (rent, sales inventory, other)	\$329,128
<b>TOTAL REVENUES IN CASH</b>	<b>\$3,529,682</b>

### REVENUE DONATION IN KIND

RECEIVED-Material Aid Medicines & emergency supplies	\$265,540
<b>TOTAL REVENUE CASH &amp; IN KIND DONATION</b>	<b>\$3,795,223</b>

### EXPENSES

#### IN KIND-EXPENSES

EXPENSES-Material AID Medicines & others	%	\$442,688
--	---	-----------

#### PROGRAMS

Expenditures Microcredit Program	31%	\$1,054,725
Eiting Foundation Agro-Industrial & Infrastructure Programs	6%	\$215,940
COMRURAL-SAG Assistance in Agricultural Production	0.2%	\$8,343
Church of the Brethren Small Animals Microbusiness Projects	0.3%	\$10,819
PAG Expenses Siguatepeque, San Isidro and Belén	2%	\$80,749

#### Health Program

Eiting Foundation Community Health CHAM Program, Comayagua	6%	\$217,174
Eiting Foundation Community health CHAM Program, Belén	4%	\$122,303
Hillspring Church- Water Systems and Housing	1%	\$40,463
Hope International Canada	1%	\$26,435

#### Flor del Campo Project:

John Knox Church Pastoral & Youth Scholarship Program	1%	\$48,565
Cornerstone-SG-ICA Building Futures Program	2%	\$62,681

#### Education and Civil Society Program

S.G. Foundation-Deborah Program	2%	\$63,402
---------------------------------	----	----------

#### PANACAM project

MOCAPH FAPVS funds	0.3%	\$8,805
UICN-PAG	0.4%	\$14,340
SEFIN-IDB-PANACAM combat round-headed pine beetle	4%	\$145,640
PANACAM Park protection Program	2%	\$57,531
PAG Expenses PANACAM Lodge	2%	\$62,905
PAG Expenses Restaurant La Naturaleza	3%	\$87,080

#### Other Project and Expenditures

General Administration	10%	\$330,943
Road Access Construction	1%	\$38,216
USFS- Forest Service	3%	\$115,200
Ferry Boat-transportation service	1%	\$17,970
Emergency Expenditures	4%	\$122,342
Depreciation equipment and property	1%	\$26,169

<b>TOTAL EXPENSES</b>	<b>87%</b>	<b>\$3,421,427</b>
-----------------------	------------	--------------------

<b>TOTAL Net Excess of Revenue Over Expenses</b>	<b>\$373,796</b>
--	------------------

\*These loan funds are owed to PAG. With the difficult economic conditions, it will require years to collect these funds back; another casualty of COVID-19 and the destructive hurricanes of 2020.





## 2020 FRIENDS & DONORS

A very special THANK YOU to our friends and donors for their loyal and generous support in 2020!

Aaron Wilder	Dryden Family Trust	Joan Brown	Micah Allred	St. Thomas Lutheran Church
Aaron/Dina Schumer	Duane Bland	Joe & Linda Peritore	Michael Lane	Steve & Elisabeth Potts
Agua Pura Para El Pueblo	Dull Homestead, Inc.	Joel & Christy Shaffer	Miguel Mejía	Steve & Kim Butterfield
Al Lindrose	Dwight Harriman	John & Britta Hunt	Millard & Jean Thomas	Suarez-Jakobsen Investments
Alan & Kay Bennett	Elaine & Denny Cherry	John & Kara Wilkin	Mona Lore	Suzanne & Andrew Zulauf
Albert & Kathleen Stankan	Erik Neilson	John & Lana Crowell	Myrna Slick	Tearfund UK
Allred Giving Fund	EUROPEAN UNION	John E. Olson, Trustee	Myrtle Haldeman	Ted & Debbie Clum
Amigos de Honduras-USA	Extra Mile Ministries	John Johnson & Eloise Shumacher	Nancy & John Serratore	Thomas & Beverly Pomroy
Amity Lumper/Derek Low	Food Resource Bank	John Knox Presbyterian Church	Nataly Carbajal	Thomas & Diane Bridge
Amy Lehnhoff	Frank Caropreso	Jonathan & Lorraine Williams	Network for Good	Thomas/Patricia Swartz
AnnMary Dykstra	Fundacion Pestalozzi	Jonathan McPeters	Nicole Lansdale	Tim Geisse
Arthur W. Harrigan, Jr.	Gale Batchellor	Joni/Lawrence Sell	Nikki & Luis Bonilla	Timothy & Linda Buchanan
Ballenger Family Partnership	Gary & Dixie Baker	Joseph De Vita	None Will Perish Foundation	Todd & Erin Grimm
Barbara Huffman	GdH - Proyecto Vida Mejor	Joseph Valentine	Olga Thomas	Tom & Paulette Zarecki
Barbara/ Karl Striebel	Geiger Church of the Brethren	Joseph Yoder	Oliver Yackley	Tom Carter
Bill & Jeanette Hunsberger	Geisse Foundation	Junko Gussman	Pamela Bickford	Tom Strombeck
Bill Horsley	Gerry Walters	Kara & John Wilkin	Patricia Eiting Foundation	USAID ACCESO-FINTRAC
Bill Miller Equipment Co.	Gleanings for the Hungry	Karen Kass	Paul Nitardy	USAID ALIANZAS de Mercado
Brent Buchanan	Glen & Rebecca Gordon	Karleen Kennedy	Paul Zommers	USAID FINTRAC - Mercado
Brian Rudert	Gloria Lomax	Katherine Sterling	Paulette Zarecki	USAID PROPARQUE
Bruce McIvor	Gobierno de Japón - SAG	Kathy & Jeff Shaffer	Perfect Eyebrows	Victoria M. Seitz
Carl/Sharon Yoder	Grant & Marsha Jensen	Kathy Troyer	Peter & Jody Dull	Victoria McDonald
Carol Hodgen	Greenwich Investment Management	Ken Koenig	Peter & Julie Stiles	Victoria Wong
Caropreso and Friends	Greg & Shannon Whitney	Kenneth & Janet Blough	Peter Bohlen	Virgil Troyer
Chad & Randi Allred	Gregory & Judy Croner	Kevin & Elizabeth Hopkins	Phil & Karen Covel	Wabash Church
Cheryl Hoffner	Gunter & Karen Kass	Kristin Holland	Phil Arneson	Wayne & Geraldine Swan
Cheryl Kephshire	H. O. Woltz II	Kyle Fiore	Pleasant Hill COB	William & Audrey Wenger
Chris Casali	Haley Ballast	Larry & Linda Williams	Richard Miller / Markus Lipfert	William & Laurie Essig
Chris Schueler	Harry De La Cruz	Larry & Rev. Nila Cogan	Richard Ward Loudis	William & Marie Miller
Christian Elliott	Heidi Battaglia	Laurie Sauerwein	Richard Weaver	William & Shirley Tillman
Christina Caropreso	Heidi Gurule	Lily Powelstock	Riley Arneson	William J De Nies
Christina Ravinet	Heidi/Andrew Dryden	Linda & Mark Eilers	Robert & Christie Zoba	William Shroyer
Christine Shroyer	Helen Ellis	Linda Betanco	Robert & Elaine Meyers	Woodbury COB
Church of the Brethren	Herman Felstenhausen	Linda Hannon	Robert & Karen Tait	World Accord - Canada
Clarine & Rouben Kvamme	Hillside Pilgrim Class	Lindsey Whisonant	Robert & Ruth Bayley	
Dale & Gloria Holder	Hillspring Church	Lorna Wallick	Robert Kunst	
David & Katherine Pruett	HOPE International Canada	Lorna Wiggins	Robert Terry Gift Fund	
David & Lucia Gill	ICF-FAPVS Areas Protegidas	Lucas Wall / Maria Cantoni	Roger & Joy Neubauer	
David Alverson	Ignacio and Cristina Diego	Luke Goebel	Ronald & Adrienne Punako	
David Beaudreau	International Christian Aid	Magdalena Wall	Ross Cornelius	
David Befus	Ira Richards	Maple Springs COB	Roy & Karen Lepper	
David Ray	Jack & Marie Eiting Foundation	Marcela Gutierrez	Ruby/Jay Mader	
David Utzinger	Jack & Rylma Berquist	Margaret Stanley	Rudolf Lamprecht	
Dean Wintermute	Jacob Olinger	Maria Amalia Wood	Rummel COB	
Deborah Strom	James & Colleen Cooper	Marian Kunst	Russell & Catherine Jones	
Deborah/Anjan Purkayastha	James & Damaris Barborak	Marie Miller	S.G. Foundation	
Dena Kaplan	James & Margaret Townsend	Marjorie & Jeffrey Lansdale	SAG-ComRural	
Denise Peine	James & Tressa Petersen	Mark & Haydee Allred	Sandra Harlan	
Direct Relief International	James Dunn	Mark & Laurie Sauerwein	Scott & Lisa Grayson	
Dirk and Dixie Havlak	Janet N. Gold	Mary Blackwell Kilby	Scott & Lorna Wallick	
Donald & Donna Heisey	Jasam Foundation	Mary C Randsdell	Second Union Church of San Juan	
Donna & Ole Myrdal	Jeff & Margaret Boshart	Matthew P. Saul	Shannon & Tillie Duncan Trust	
Donna Croft	Jeff Rettman	Medical Team International	Sharon & Alan Bennett	
Donna J. Koerker	Jens Molbak	Melva Altamirano	Shirley Peace	
Dr. Levy	Jim Dunn	Mennonite Central Committee	Sidney Powelstock	